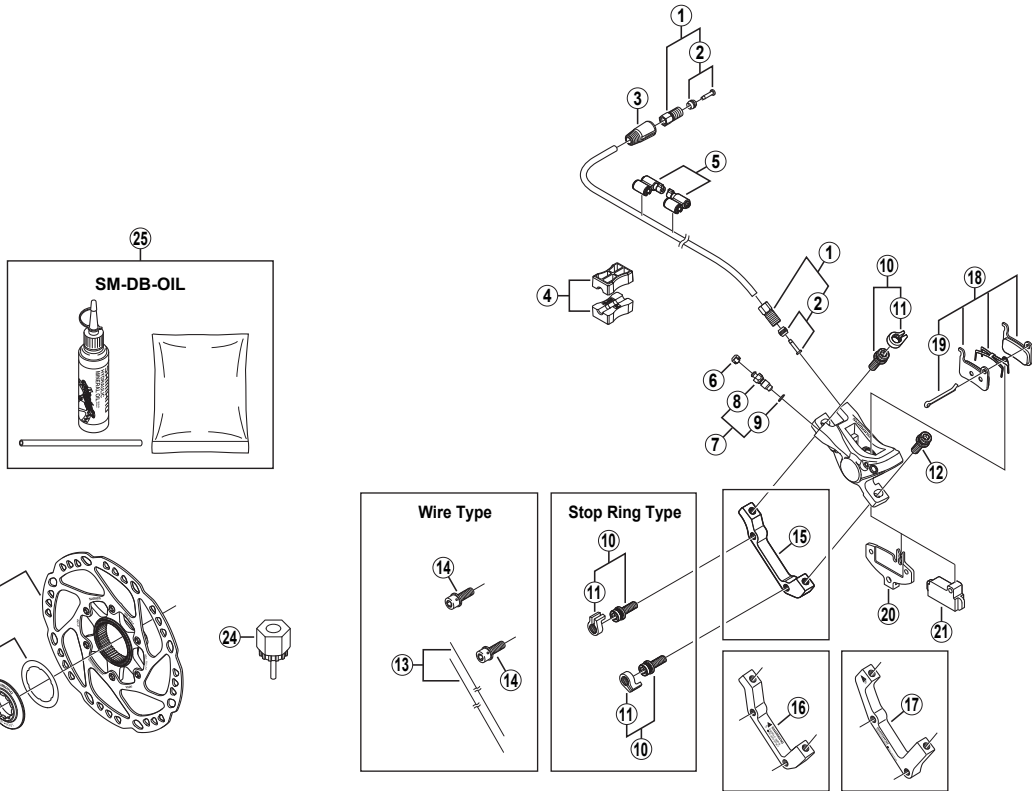


SHIMANO Rear Disc Brake

BR-T605 Brake Caliper
SM-RT64 Disc Rotor

SM-BH59 Brake Hose



BR-M865
BR-M585

ITEM NO.	SHIMANO CODE NO.	DESCRIPTION	INTERCHANGEABILITY	
1	Y-8H298010	Connecting Bolt Unit	A	A
2	Y-8H298020	Olive & Connecting Insert	A	A
3	Y-8H203010	Cover	A	A
4	Y-8H198030	TL-BH61 Special Tool (2 pcs.)	A	A
5	Y-83098040	SM-HANG Hose Supporter A & B	A	A
6	Y-8B214000	Bleed Nipple Cap	A	A
7	Y-8CL98050	Bleed Nipple & Seal Ring	A	A
8	Y-8CL24000	Bleed Nipple	A	A
9	Y-8B511001	O-Ring for Bleed Nipple	A	A
10	Y-8DS98010	Adapter Fixing Bolt (M6 x 18.7) & Stop Ring	A	A
11	Y-8C511000	Stop Ring	A	A
12	Y-8C509020	Adapter Fixing Bolt (M6 x 18.7) for Stop Ring Type	A	A
13	Y-8B298010	Wire (2 pcs.)	A	A
14	Y-8B512000	Adapter Fixing Bolt (M6 x 19) for Wire Type	A	A
15	Y-8DB10100	A-Standard Mount Adapter for Disc Rotor ϕ 160 mm	A	
16	Y-81771000	A-Standard Mount Adapter (SM-MA-R180P/S) for Disc Rotor ϕ 180 mm	A	
17	Y-8CZ01010	A-Standard Mount Adapter (SM-MA-R203P/S) for Disc Rotor ϕ 203 mm	A	
18	Y-8EP98010	Resin Pad (A01S) & Spring w/Split Pin	A	
	Y-8CL98010	Metal Pad (M06) & Spring w/Split Pin	A	
19	Y-8DB06000	Split Pin	A	A
20	Y-8CL12000	Pad Spacer	A	A
21	Y-8CL18000	Spacer for Bleeding	A	A
22	I-SMRT64	SM-RT64 Disc Rotor Unit (ϕ 160 mm)	A	
	I-SMRT64M	SM-RT64M Disc Rotor Unit (ϕ 180 mm)	A	
	I-SMRT64L	SM-RT64L Disc Rotor Unit (ϕ 203 mm)	A	
23	Y-8CL98090	Lock Ring & Washer	A	
24	Y-12009230	TL-LR15 Lock Ring Removal Tool	A	A
25	Y-83998010	Mineral Oil Bleed Kit (50 ml)	A	A

A: Same parts.

B: Parts are usable, but differ in materials, appearance, finish, size, etc.

Absence of mark indicates non-interchangeability.

0806-2855

Specifications are subject to change without notice.

SHIMANO